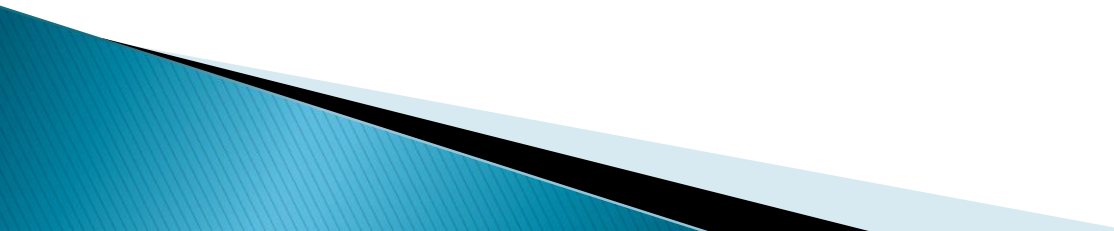


How to organize an EPC? –World Café Summary–

5th USPE Police Sport Conference
Eger (Hungary)

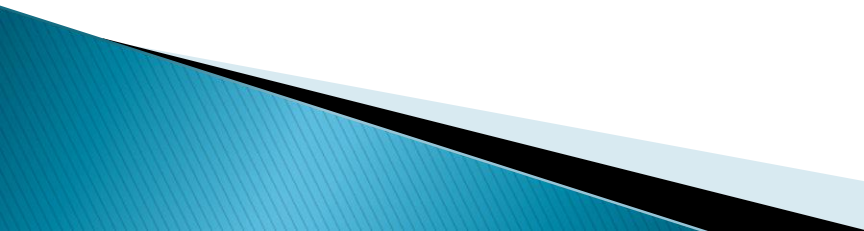
Budget/General

- ▶ Budget plan
 - To be created in time
 - To be monitored
 - ▶ Differences in EPC have influence on the budget
 - Number of days
 - Number of participants
 - Discipline
 - ▶ Need for more detailed USPE minimum standard?
- 

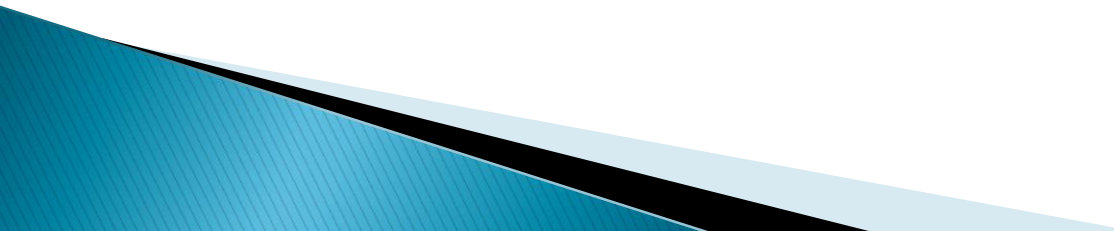
Budget/Income

- ▶ Money or natura
- ▶ Extra resources (MARKETING)
 - Police and Government
 - Sponsors
 - Partners
 - Local Authorities → city marketing?
 - Sports Federations
 - USPE
 - Participating countries
(lodging fee/pricesetting)

Budget/Expenses

- ▶ Lodging
 - All in one (athletes and delegates)
 - Good timing saves money
 - ▶ Food and Beverage
 - ▶ Competition
 - ▶ Transport
 - Is linked with the venues
 - ▶ Ceremonies
 - ▶ Public Relation & Communication
- 

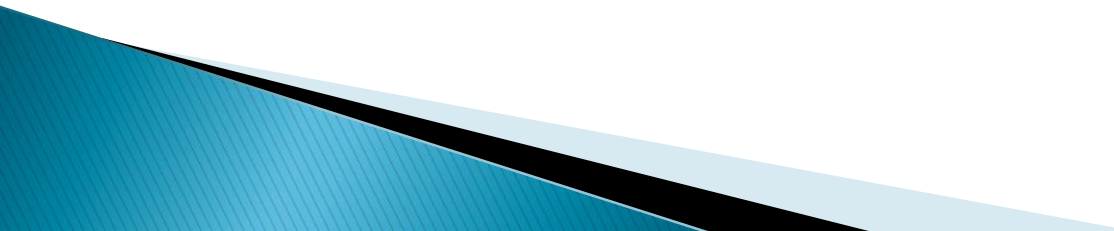
Budget/Expenses

- ▶ Anti-Doping
 - ▶ Staff
 - Volunteers
 - Police (leisure or working hours)
 - ▶ VIP
 - Government/Police Authorities
 - Sponsors
 - Delegates/Officials
 - ▶ Cultural program for all participants
- 

Organisationstructure

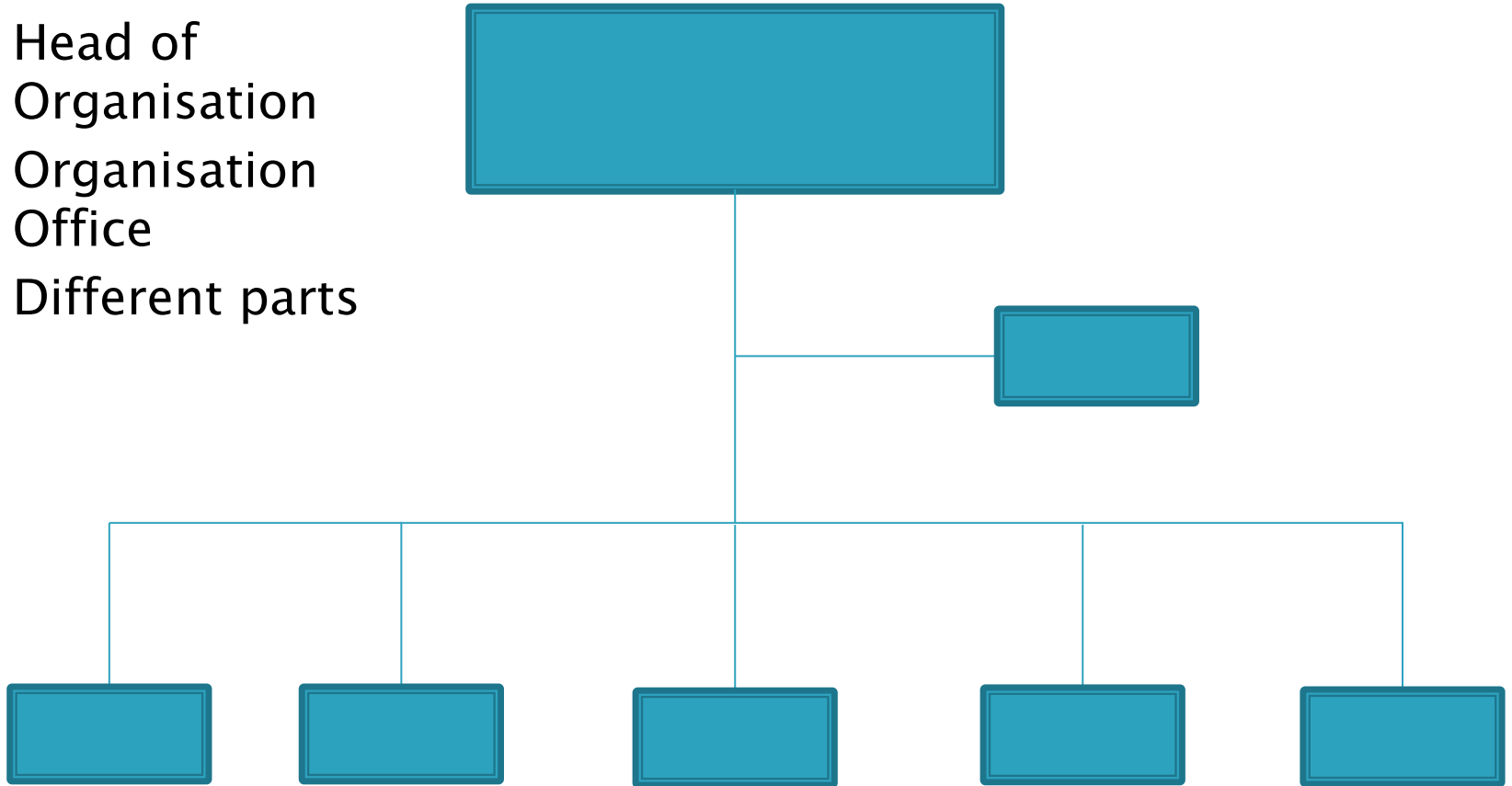
Building of an Organizing Committee (OC)

1,5 – 3 years before the EPC

- ▶ Head of OC
 - ▶ Defination of parts
 - ▶ Defination of persons in charge for the parts
 - ▶ Organizing Office
- 

Organisationstructure

- ▶ Head of Organisation
- ▶ Organisation Office
- ▶ Different parts



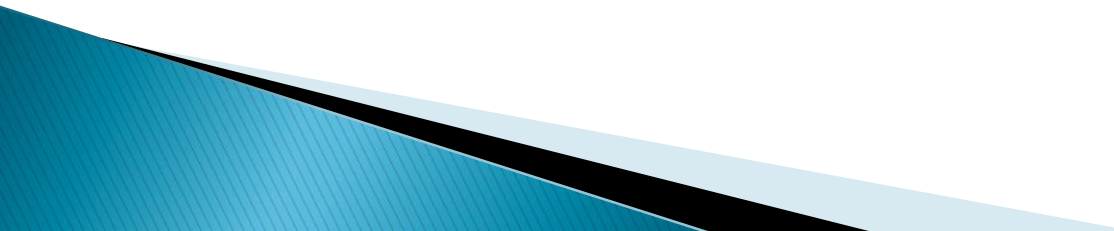
Board / Lodging

Accommodation / Food

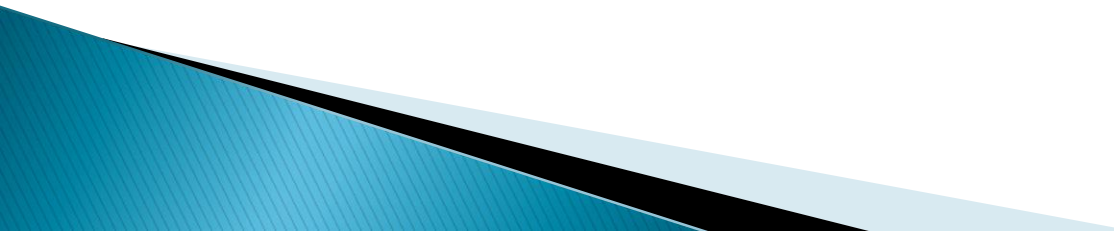
- ▶ Early contract (special offer?)
- ▶ close to the venue
- ▶ accommodation for all in the same hotel
- ▶ food
 - athletes choice → quantity/quality/content
- ▶ Quality/ size of the rooms (2 persons, 2 beds, WC, shower, clean, quiet)
 - minimum 3-Star if possible

Board / Lodging

Accommodation / Food

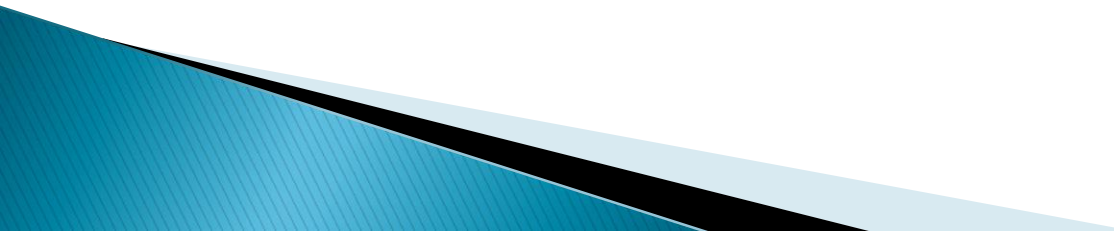
- ▶ information desk/info-point
 - ▶ accreditation room
 - ▶ room for Technical Meeting
 - ▶ room for closing banquet
 - ▶ Social area for athletes and officials
- 

Transport:

- ▶ Airport
 - ▶ Hotel
 - ▶ Venue
 - ▶ Coordination
 - ▶ Shuttle System
 - ▶ Transport of officials
 - Short distances/short time
- 

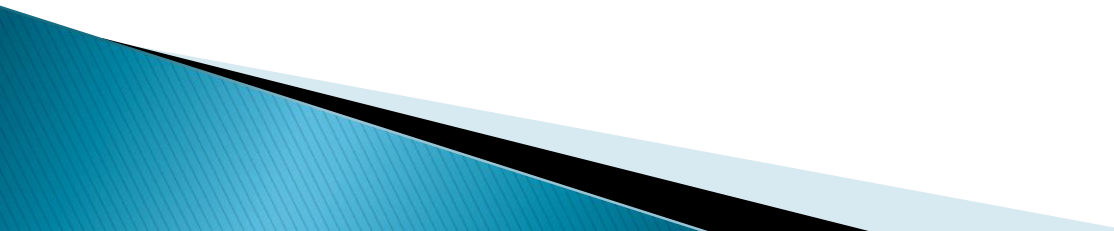
Competition

Information before the EPC:

- ▶ Facilities
 - ▶ Hotel
 - ▶ Location
 - ▶ Schedule
 - ▶ Rules and Regulation
 - ▶ Medical assistance
- 

Competition

Information during the EPC:

- ▶ Program
 - ▶ Results
 - ▶ Usefull information
 - ▶ Technical Meeting (every day if necessary)
- 

Competition

Competition Venue:

- ▶ International Standard
- ▶ Close to the hotel (15/20 minutes)

Referees:

- ▶ International standard/high national standard
- ▶ Respecting also USPE-Rules

Competition

Ceremonies:

- ▶ Opening: short speeches
 - ▶ Medal: short as possible
 - ▶ Closing: short speeches
- 